

Class J Fuses

JLS Series

600 V ac • Fast-Acting • 1–600 A

RoHS QPL UL SP CE



Description

The JLS Series fast-acting fuses provide space-saving overload and short-circuit protection for vital industrial and power conversion applications. These superior, current-limiting fuses offer fast-acting protection for surge-sensitive devices and components to prevent costly equipment damage. They are highly sensitive to changes in current flow and open within seconds of being exposed to overcurrents or power surges.

Features & Benefits

FEATURES	BENEFITS
Fast-acting	Provides protection for equipment requiring fast overload protection
Current-limiting	Reduces damage caused by heating and magnetic effects of short-circuit currents
200,000 AIR	Reliable interruption of all overcurrents up to 200,000 A
Compact size	Useful when space is limited: 4 5/8" long, 1 1/8" diameter
POWR-GARD® technology	Designed for maximum protection from overcurrent

Applications

- Power conversion devices
- Variable speed drives
- Rectifiers
- Resistive loads
- Solid-state devices

Specifications

Voltage Ratings	600 V ac
Ampere Range	1–600 A
Interrupting Rating	200 kA rms symmetrical
Applicable Standards	Standard 248-8, Class J Federal Specification WF-1814

Class J Fuses

JLS Series

Certification & Compliance

UL	UL Listed File E81895
CSA	CSA Certified File: LR29862
CE	EU_DOC-JLS_210701
QPL	QPL-Q-F-1814
RoHS	RoHS 2 Directive 2011/65/EU; Directive (EU) 2015/863

Accessories

LFJ60 series fuse holder

LFPSJ series (1/10–60 A) fuse holder

Ordering Information

AMPERE	CATALOG NUMBER	PRODUCT MARKING	PACK QUANTITY	ORDERING NUMBER	UPC	AGENCY APPROVALS	
						UL	CSA
1	JLS001	JLS 1	10	OJLS001.T	07945820031	•	•
3	JLS003	JLS 3	10	OJLS003.T	07945820047	•	•
6	JLS006	JLS 6	10	OJLS006.T	07945820058	•	•
10	JLS010	JLS 10	10	OJLS010.T	07945820065	•	•
15	JLS015	JLS 15	10	OJLS015.T	07945820068	•	•
20	JLS020	JLS 20	10	OJLS020.T	07945820071	•	•
25	JLS025	JLS 25	10	OJLS025.T	07945820072	•	•
30	JLS030	JLS 30	10	OJLS030.T	07945820073	•	•
35	JLS035	JLS 35	10	OJLS035.T	07945820074	•	•
40	JLS040	JLS 40	10	OJLS040.T	07945820075	•	•
45	JLS045	JLS 45	10	OJLS045.T	07945820076	•	•
50	JLS050	JLS 50	10	OJLS050.T	07945820077	•	•
60	JLS060	JLS 60	10	OJLS060.T	07945820078	•	•
70	JLS070	JLS 70	5	OJLS070.V	07945820079	•	•
80	JLS080	JLS 80	5	OJLS080.V	07945820080	•	•
90	JLS090	JLS 90	5	OJLS090.V	07945820081	•	•
100	JLS100	JLS 100	5	OJLS100.V	07945820082	•	•
110	JLS110	JLS 110	1	OJLS110.X	07945820083	•	•
125	JLS125	JLS 125	1	OJLS125.X	07945820084	•	•
150	JLS150	JLS 150	1	OJLS150.X	07945820085	•	•
175	JLS175	JLS 175	1	OJLS175.X	07945820086	•	•
200	JLS200	JLS 200	1	OJLS200.X	07945820088	•	•
225	JLS225	JLS 225	1	OJLS225.X	07945820089	•	•
250	JLS250	JLS 250	1	OJLS250.X	07945820090	•	•
300	JLS300	JLS 300	1	OJLS300.X	07945820091	•	•
350	JLS350	JLS 350	1	OJLS350.X	07945820092	•	•
400	JLS400	JLS 400	1	OJLS400.X	07945820093	•	•
450	JLS450	JLS 450	1	OJLS450.X	07945820095	•	•
500	JLS500	JLS 500	1	OJLS500.X	07945820096	•	•
600	JLS600	JLS 600	1	OJLS600.X	07945820097	•	•

Class J Fuses

JLS Series

Dimensions

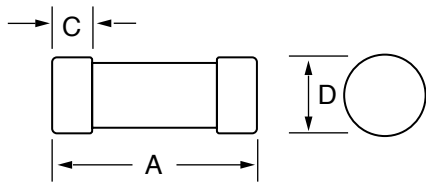


Fig. 1

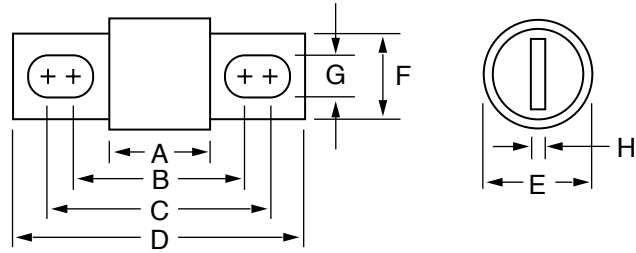


Fig. 2

AMPERAGE	FIG. NO.	DIMENSIONS INCHES (mm)							
		A	B	C	D	E	F	G	H
1-30	1	2¼ (57.2)	—	½ (12.7)	⅜ (20.6)	—	—	—	—
35-60	1	2⅝ (60.3)	—	⅝ (15.9)	⅞ (27.0)	—	—	—	—
70-100	2	2⅝ (66.7)	3 1/32 (89.7)	3 23/32 (94.5)	4 ⅝ (117.5)	1 (25.4)	¾ (19.1)	9/32 (7.1)	¼ (3.2)
110-200	2	3 (76.2)	4 9/32 (108.7)	4 15/32 (113.5)	5 ¼ (146.1)	1 ½ (38.1)	1 ⅛ (28.6)	9/32 (7.1)	3/16 (4.8)
225-400	2	3 ⅜ (85.7)	5 ⅝ (130.2)	5 ⅝ (136.5)	7 ⅛ (181.0)	2 (50.8)	1 ⅝ (41.3)	13/32 (10.3)	¼ (6.4)
450-600	2	3 ¾ (95.3)	5 27/32 (148.4)	6 5/32 (156.4)	8 (203.2)	2 ½ (63.5)	2 (50.8)	17/32 (13.5)	3/8 (9.5)

Current-Limiting Effects

SHORT CIRCUIT CURRENT*	APPARENT RMS SYMMETRICAL CURRENT FOR VARIOUS FUSE RATINGS					
	30 A	60 A	100 A	200 A	400 A	600 A
5,000	750	1,450	1,650	2,600	4,450	5,000
10,000	925	1,800	2,050	3,200	5,450	8,700
15,000	1,050	2,025	2,350	3,600	6,200	9,650
20,000	1,150	2,225	2,570	3,950	6,700	10,400
25,000	1,225	2,375	2,750	4,200	7,200	11,000
30,000	1,300	2,500	2,900	4,400	7,500	11,750
35,000	1,350	2,600	3,050	4,650	7,900	12,250
40,000	1,425	2,725	3,200	4,850	8,200	12,500
50,000	1,525	2,900	3,450	5,200	8,750	13,500
60,000	1,600	3,100	3,650	5,500	9,250	14,000
80,000	1,775	3,375	4,000	6,000	10,000	15,000
100,000	1,900	3,600	4,250	6,400	10,800	16,000
150,000	2,125	4,050	4,900	7,300	12,150	18,000
200,000	2,350	4,450	5,300	8,000	13,150	19,250

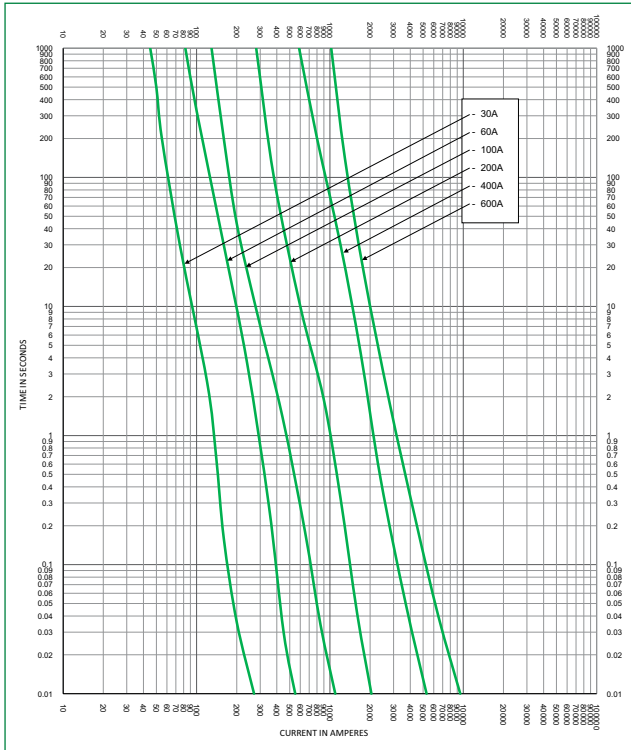
*Prospective RMS Symmetrical Amperes Short-Circuit Current

Note: Data Derived from Peak Let-Thru Curve

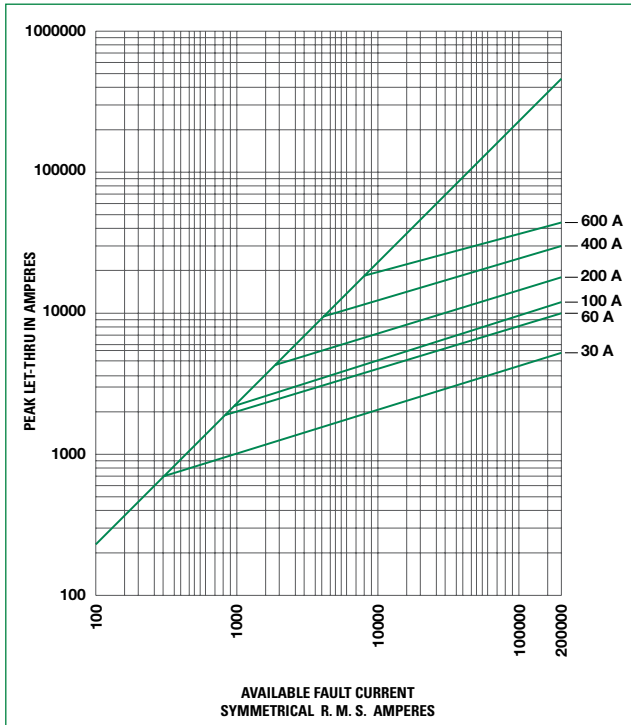
Class J Fuses

JLS Series

Time Current Curve



Peak Let-Thru Curve



Disclaimer Notice – Information furnished is believed to be accurate and reliable. However, users should independently evaluate the suitability of and test each product selected for their own applications. Littelfuse products are not designed for, and may not be used in, all applications. Read complete Disclaimer Notice at www.littelfuse.com/product-disclaimer.