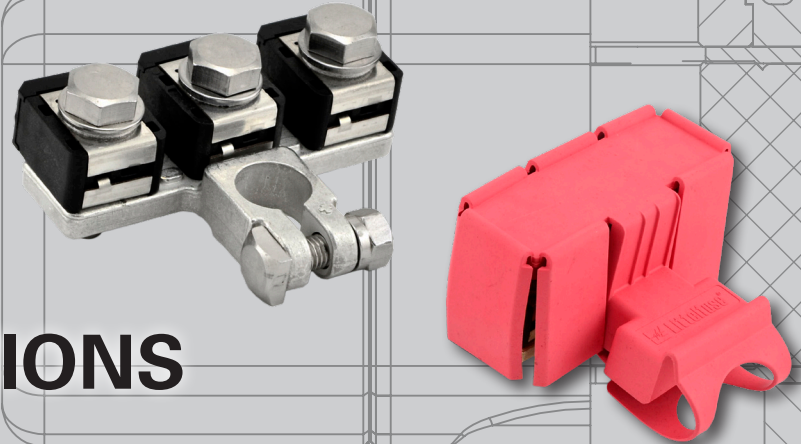


BMZF SERIES BATTERY MOUNT ZCASE® FORGED FUSE HOLDER

DESIGNED FOR RIGOROUS COMMERCIAL VEHICLE APPLICATIONS



The BMZF Series Battery Mount ZCASE Fuse Holder's forged brass design is more rugged and better suited for heavy duty applications than other solutions in the market place. The BMZF's integrated battery clamp allows for high current fusing to be mounted directly to a post style battery terminal without additional mounting hardware. The compact design of the BMZF optimizes system cost by eliminating additional cables, separate high current fuse holders and the required labor to assemble and install traditional fuse holders into crowded spaces.

The BMZF Series accepts Littelfuse proprietary M10 ZCASE fuses that are available in ratings from 80-600A and that have characteristics similar to those of the MEGA fuse. For fuses rated 80-250A, circuits are protected from damage due to prolonged overload current conditions. At ratings from 300-600A, the ZCASE acts as a short circuit protector, allowing high inrush currents but protecting from system faults.

*The special insulated bolt has a metal bolt head which allows for proper torque application to make a reliable high current connection. Unlike with plastic insulators, the mineral isolating washer prevents long term torque reduction due to creep. The integrated isolation shell prevents current from bypassing the fuse element.

Web Resources

For more information and to download the datasheet, 2D Print and 3D Model, visit: Littelfuse.com/BMZF

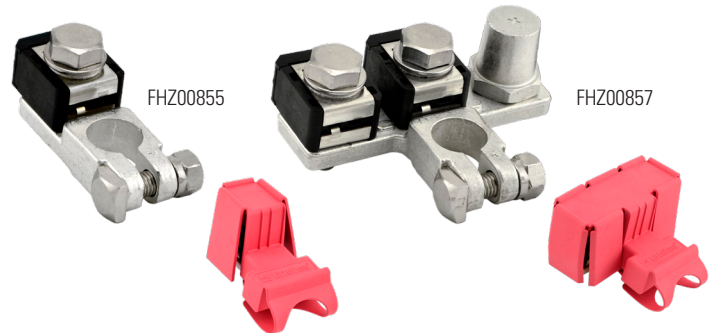
Ordering Information

| PART NUMBERS | | | DESCRIPTION |
|--------------|-------------|--------------|--|
| BULK | BOXED | BLISTER PACK | |
| FHZ00855 | FHZ00855-BX | FHZ00855-BP | Fuse Holder Battery Mount ZCASE 1 Position |
| FHZ00856 | FHZ00856-BX | — | Fuse Holder Battery Mount ZCASE 3 Position |
| FHZ00857 | FHZ00857-BX | — | Fuse Holder Battery Mount ZCASE 2 Position + Post |
| 890010900* | — | — | BMZF M10 Isolated Bolt Assembly - Required for system to operate |

*The special isolated bolt is required for system operation.

BMZF Series Features and Benefits

- Mounts directly to post style battery terminal
- Consolidates multiple fuse holders and reduces wiring
- Rugged forged brass design stands up to heavy cables and harsh battery box or underhood conditions
- *Special insulated bolt for higher quality, longer lasting electrical connection
- 2 position configuration features one unfused battery post to allow extra fused circuits to be added without modifying original battery cable (as modifying the battery cable can void the factory warranty)



Datasheet



3D Model



2D Print