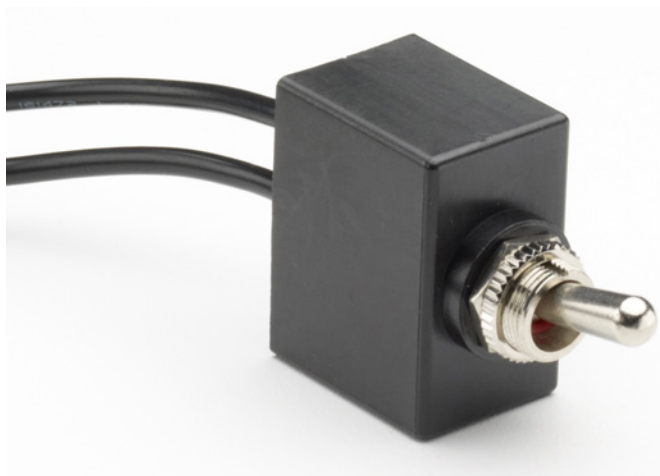


25A SEALED TOGGLE SWITCHES

O-Ring & Epoxy Seal • IP68 • Wire Lead Terminals

Cole Hersee
A Littelfuse® Brand

RoHS



Features and Benefits

- Waterproof and dustproof to IP68 standard – allows mounting anywhere on vehicle.
- Silver contacts ensure long life.
- Available in multiple configurations including momentary and latched options.
- RoHS compliant.
- Dashboard seal available.

Web Resources

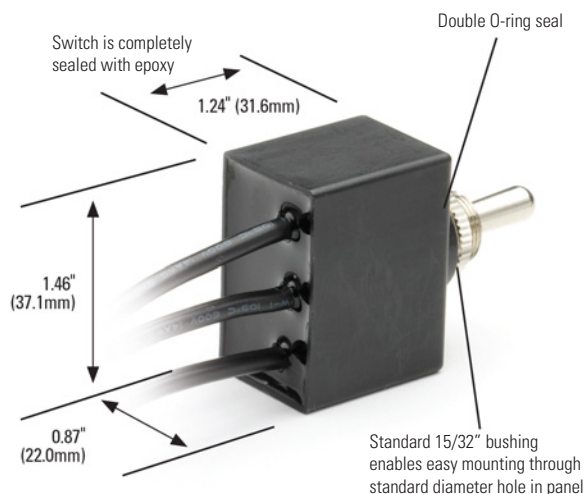
Download technical resources at:
littelfuse.com/55025

Specifications Overview

Rating:	25A at 12V DC 15A at 24V DC
Operating Temp:	-40 °C to +85 °C
Ingress Protection:	IP68

Ordering Information

PART NUMBERS			CIRCUITRY	TERMINALS
BULK	BOXED	RETAIL		
55025	55025-BX	55025-BP	SPST On-Off	2 Wire Leads
55025-01	55025-01-BX	55025-01-BP	SPST Mom On-Off	2 Wire Leads
55025-02	55025-02-BX	55025-02-BP	SPDT On-Off-On	3 Wire Leads
55025-03	55025-03-BX	55025-03-BP	SPDT On-On	3 Wire Leads
55025-04	55025-04-BX	55025-04-BP	SPDT Mom On-Off-Mom On	3 Wire Leads
55026	55026-BX	55026-BP	DPST On-Off	4 Wire Leads



Specifications

Rating	25A at 12V DC 15A at 24V DC
Contacts	Silver
Operating Temperature Range	-40°C to 85°C (-20°F to 185°F)
Bushing, Handle and Hardware	Nickel-Plated Brass
Standard Handle	0.60" long (15.3mm)
Handle Actuation Force	32-38 oz (8.9-10.5N)
Standard Mounting Panel Hole	0.468 – 0.474" diameter (11.9-12.0mm)
Standard Bushing Diameter	0.47 (12.0mm) 15/32" thread, 0.32" long (5.8mm)
Keyway	Down Position
Wires:	14AWG (2mm ²), 12" long (304.8mm)
Switch Body:	1.24" deep x 0.87" wide x 1.46" high (31.6 x 22.0 x 37.1mm)

Datasheet Replaces Hotfeed Number D-624