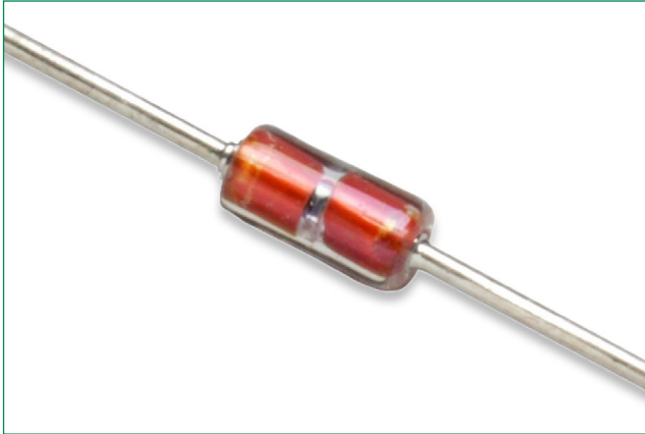


**DO-34 Standard Series Glass Encapsulated Thermistors**



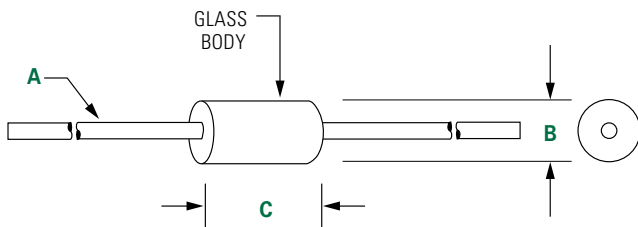
**Description**

Littelfuse low cost glass encapsulated thermistors are manufactured using super stable NTC chips which are hermetically sealed in a glass (DO-34 diode style) package. The result is a device which exhibits excellent long-term reliability and stability even when subjected to severe environmental or thermal conditions. Their uniform dimensions and axial lead configuration make them especially suitable for use with automatic insertion equipment.

**Options**

- Non-standard resistance values and tolerances
- Point matched at specified temperatures
- Tape and Reel Packaging

**Dimensions**



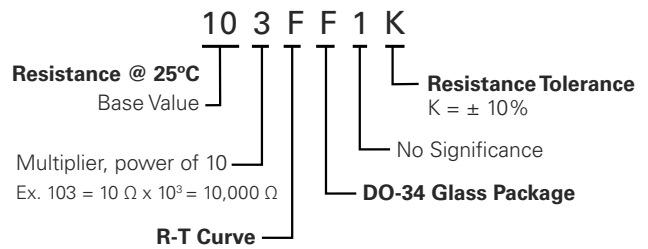
Dimensions shown in inches.

A	B	C
0.157" ±0.0025" Dia 22 AWG Tinned CCS 1.0" Long Min	0.065" Max	0.110" Max

**Features**

- High temperature capability to +300°C
- Hermetically sealed glass package
- Low cost
- Excellent long-term stability
- High Voltage Insulation
- Tinned CSS Lead Wires are Solderable or Weldable

**Part Numbering System**



Note: Not all combinations of Part Number codes are available. Contact Littelfuse for details.

## DO-34 Standard Series Glass Encapsulated Thermistors

### Specifications

Part Number	Resistance Ohms @25°C	*Resistance Tol. ± % @ 25°C	R-T Curve	Temperature Coefficient (%/°C) @ 25°C	Beta (K) 0-50°C	Dissipation Constant, Nominal (mW/°C)	Thermal Time Constant, Max. - Still Air (seconds)	Thermal Time Constant, Max. - Well Stirred Oil (seconds)	Temperature Rating (°C)
202FF1K	2000	10	F	-	3419	2	5	0.5	-55 to + 300
103FF1K	10000	10	F	-3.86	3419	2	5	0.5	-55 to + 300
103JF1K	10000	10	J	-4.4	3892	2	5	0.5	-55 to + 300
123JF1K	12000	10	J	-4.4	3892	2	5	0.5	-55 to + 300
683N1F1K	68000	10	N1	-4.5	4073	2	5	0.5	-55 to + 300
104JF1K	100000	10	J	-4.4	3892	2	5	0.5	-55 to + 300
334RF1K	330000	10	R	-4.68	4263	2	5	0.5	-55 to + 300

\* Resistance tolerances of ± 1%, 2%, and 5% are available upon request

### Packaging

Packaging Option	Packaging Code	Standard Quantity	Standard
Tape and Reel	-TR	5000	EIA-296

**Disclaimer Notice** - Information furnished is believed to be accurate and reliable. However, users should independently evaluate the suitability of and test each product selected for their own applications. Littelfuse products are not designed for, and may not be used in, all applications. Read complete Disclaimer Notice at: [www.littelfuse.com/disclaimer-electronics](http://www.littelfuse.com/disclaimer-electronics)