

Specification Status: Released

Maximum Electrical Rating

Operating Voltage: 6Vdc
Interrupt Current: 50A

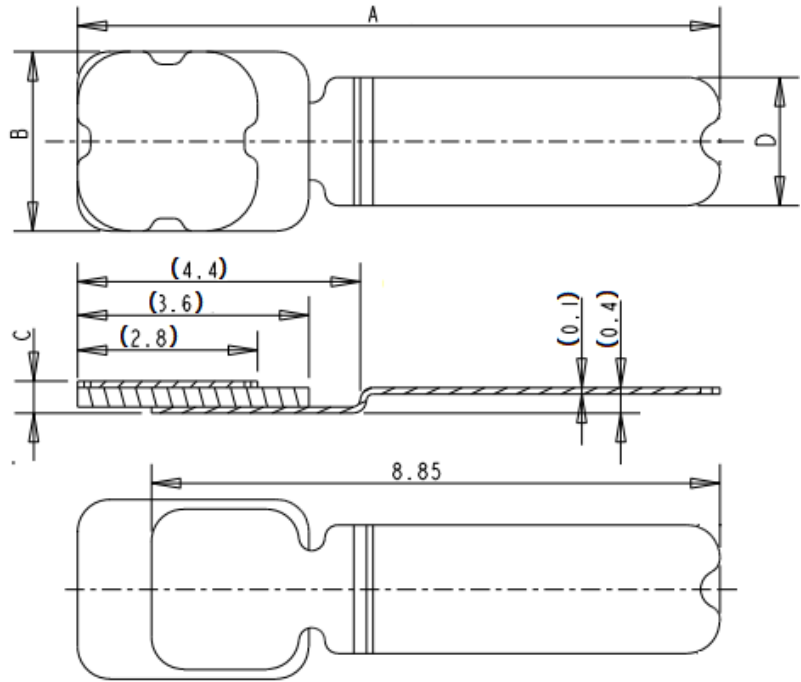
Chip: 3.6mm x 2.8mm

Leads: Nickel 1/2H, 0.10mm nominal thickness

Solder: Lead-free

Tape: None

Marking: None



Notes:
Unspecified dimensions, tolerance should be +/-0.1mm
Dimensions in brackets are for reference

TABLE I. DIMENSIONS:

	A		B		C		D	
	MIN	MAX	MIN	MAX	MIN	MAX	MIN	MAX
mm:	9.7	10.3	2.65	2.95	--	0.65	1.9	2.1
in*:	0.382	0.406	0.106	0.114	--	0.024	0.075	0.083

*Rounded off approximation

TABLE II. PERFORMANCE RATINGS: As measured in Mueller Kelvin Clips model BU-75K.

CURRENT TRIP LIMITS**						TIME TO TRIP**		REFERENCE RESISTANCE		POST REFLOW RESISTANCE*		TRIPPED-STATE POWER DISSIPATION**
AMPS AT -°C		AMPS AT 25°C		AMPS AT -°C		SECONDS AT 25°C, 18.5A		OHMS AT 25°C		OHMS AT 25°C		WATTS AT 25°C, 6V
HOLD	TRIP	HOLD	TRIP	HOLD	TRIP	MIN	MAX	MIN	MAX	MIN	MAX*	MAX
-	-	3.7	12.0	-	-	-	5.0	0.0035	0.012	0.0035	0.018	1.5

* Maximum resistance is measured at least 24 hours after reflow.

** Values specified were determined using the device reflowed on PCB with 40milx1.6-ounce copper trace.

Agency Recognitions: UL
Reference Documents: PS300
Precedence: This specification takes precedence over documents referenced herein.
Effectivity: Reference documents shall be the issue in effect on the date of invitation for bid.
CAUTION: Operation beyond the rated voltage or current may result in rupture, electrical arcing or flame.

Materials Information

ROHS Compliant

ELV Compliant

Pb-Free Halogen Free*

Directive 2002/95/EC
Compliant

Directive 2000/53/EC
Compliant



*Halogen Free refers to: Br≤900ppm, Cl≤900ppm, Br+Cl≤1500ppm.

Information furnished is believed to be accurate and reliable. However, users should independently evaluate the suitability of and test each product selected for their Own applications. Littelfuse products are not designed for, and shall not be used for, any purpose (including, without limitation, military, aerospace, medical, lifesaving, life-sustaining or nuclear facility applications, devices intended for surgical implant into the body, or any other application in which the failure or lack of desired operation of the product may result in personal injury, death, or property damage) other than those expressly set forth in applicable Littelfuse product documentation. Warranties granted by Littelfuse shall be deemed void for products used for any purpose not expressly set forth in applicable Littelfuse documentation. Littelfuse shall not be liable for any claims or damages arising out of products used in applications not expressly intended by Littelfuse as set forth in applicable Littelfuse documentation. The sale and use of Littelfuse products is subject to Littelfuse Terms and Conditions of Sale, unless otherwise agreed by Littelfuse.