



ICP Test Report Certification Packet

Company name: Littelfuse, Inc.

Product Series: Pico

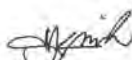
Product #: 471xxxL Series

Issue Date: March 4, 2010

It is hereby certified by Littelfuse, Inc. that there is neither RoHS (EU Directive 2002/95/EC)-restricted substance nor such use, for materials to be used for unit parts, for packing/package materials, and for additives and the like in the manufacturing processes.

In addition, it is hereby reported to you that the parts and sub-materials, the materials to be used for unit parts, the packing/package materials, and the additives and the like in the manufacturing processes, are all composed of the following components.

Issued by:


KRISTEEN BACILA

<Global EHS Engineer>

(1) Parts, sub-materials and unit parts

This document covers the Pico RoHS-Compliant series products manufactured by Littelfuse, Inc.

< Raw Materials Used

Please see Table 1

(2) The ICP data on all measurable substances

Please see appropriate pages as identified in Table 1

Remarks :

Pb (lead) contained in the high temperature melting solder > 85% and is categorized as exempt under section 7a of the RoHS Annex.



Table 1: List of Raw Materials covered by this report

Total Parts	Raw Material Part Number	Raw Material Description	Page(s)
1	909-144	Body	3-8
2	910-263	Cap and Lead Assembly	9-13
3	497xxx	Cu Clad Fe58 42Ni5Ag by weight Wire	14-18
4	082xxx	99% Cu Wire	19-23
5	692320	Solder	24-28
6	087234	Pico Gold Powder	29-34



Test Report

Applicant: Littelfuse, Inc.
800 E. NORTHWEST HWY
DESPLAINES IL 60016

Number : TWNC00141509

Date : Dec 09, 2009

Sample Description:

One (1) group of submitted samples said to be :

Part Description : Body
Part Number : 909-144
Date Sample Received : Dec 04, 2009
Date Test Started : Dec 04, 2009

Test Conducted :

As requested by the applicant, for details please refer to attached pages.

Authorized By:
On Behalf Of Intertek Testing Services
Taiwan Limited



K. Y. Liang
Director

This report shall not be reproduced
except in full, without the written
approval of the laboratory.



Number : TWNC00141509

Test Conducted

(I) Test Result Summary :

Testing Item	Result (ppm)
	Grey Material
Heavy Metal	
Cadmium (Cd) content	ND
Lead (Pb) content	52
Mercury (Hg) content	ND
Chromium VI (Cr ⁶⁺) content	ND
Polybrominated Biphenyls (PBBs)	
Monobrominated Biphenyls (MonoBB)	ND
Dibrominated Biphenyls (DiBB)	ND
Tribrominated Biphenyls (TriBB)	ND
Tetrabrominated Biphenyls (TetraBB)	ND
Pentabrominated Biphenyls (PentaBB)	ND
Hexabrominated Biphenyls (HexaBB)	ND
Heptabrominated Biphenyls (HeptaBB)	ND
Octabrominated Biphenyls (OctaBB)	ND
Nonabrominated Biphenyls (NonaBB)	ND
Decabrominated Biphenyl (DecaBB)	ND
Polybrominated Diphenyl Ethers (PBDEs)	
Monobrominated Diphenyl Ethers (MonoBDE)	ND
Dibrominated Diphenyl Ethers (DiBDE)	ND
Tribrominated Diphenyl Ethers (TriBDE)	ND
Tetrabrominated Diphenyl Ethers (TetraBDE)	ND
Pentabrominated Diphenyl Ethers (PentaBDE)	ND
Hexabrominated Diphenyl Ethers (HexaBDE)	ND
Heptabrominated Diphenyl Ethers (HeptaBDE)	ND
Octabrominated Diphenyl Ethers (OctaBDE)	ND
Nonabrominated Diphenyl Ethers (NonaBDE)	ND
Decabrominated Diphenyl Ether (DecaBDE)	ND
Halogen Content	
Fluorine (F)	ND
Chlorine (Cl)	ND
Bromine (Br)	ND
Iodine (I)	ND

Remarks: ppm = Parts per million based on weight of tested sample = mg/kg
ND = Not detected

Responsibility Of Chemist : Irene Chiou / Kevin Liu / Cathy Chen

Date Sample Received : Dec 04, 2009

Testing Period : Dec 04, 2009 To Dec 08, 2009



Number : TWNC00141509

Test Conducted

(II) RoHS Requirement:

<u>Restricted Substances</u>	<u>Limits</u>
Cadmium (Cd) Content	0.01% (100ppm)
Lead (Pb) Content	0.1% (1000ppm)
Mercury (Hg) Content	0.1% (1000ppm)
Chromium VI (Cr ⁶⁺) Content	0.1% (1000ppm)
Polybrominated Biphenyls (PBBs)	0.1% (1000ppm)
Polybrominated Diphenyl Ehters (PBDEs)	0.1% (1000ppm)

The above limits were quoted from 2002/95/EC and amendment 2005/618/EC for homogeneous material.

(III) Test Method:

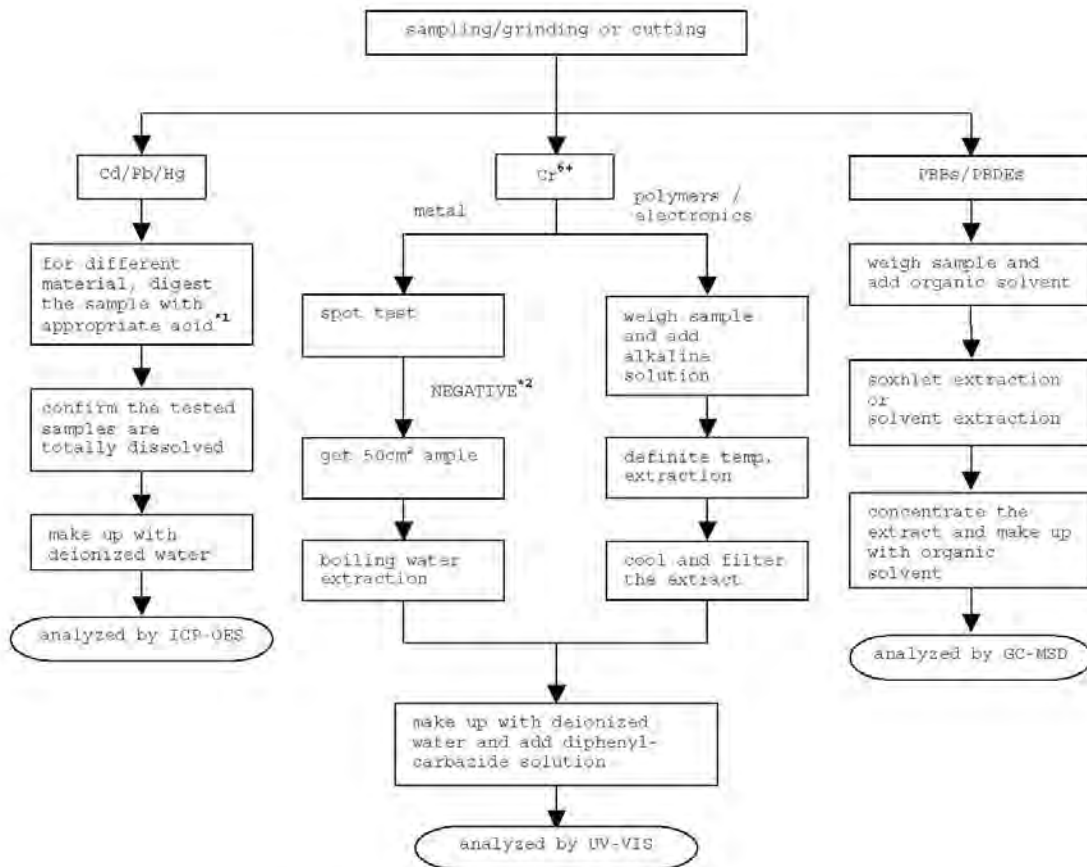
<u>Testing Item</u>	<u>Testing Method</u>	<u>Reporting Limit</u>
Cadmium (Cd) content	With reference to IEC 62321 edition 1.0:2008 in clause 8/9/10, by microwave digestion until the tested samples are totally dissolved and determined by ICP-OES.	2 ppm
Lead (Pb) content	With reference to IEC 62321 edition 1.0:2008 in clause 8/9/10, by microwave digestion until the tested samples are totally dissolved and determined by ICP-OES.	2 ppm
Mercury (Hg) content	With reference to IEC 62321 edition 1.0:2008 in clause 7, by microwave digestion until the tested samples are totally dissolved and determined by ICP-OES.	2 ppm
Chromium VI (Cr ⁶⁺) content	With reference to IEC 62321 edition 1.0:2008 in annex C, by alkaline digestion and determined by UV-Vis spectrophotometer.	1 ppm
Polybrominated Biphenyls (PBBs)	With reference to IEC 62321 edition 1.0:2008 in annex A, by solvent extraction and determined by GC-MSD and further HPLC confirmation when necessary.	5 ppm
Polybrominated Diphenyl Ethers (PBDEs)	With reference to IEC 62321 edition 1.0:2008 in annex A, by solvent extraction and determined by GC-MSD and further HPLC confirmation when necessary.	5 ppm
Halogen Content	With reference to EN 14582:2007 by combustion flask with oxygen and determined by ion chromatography	50 ppm

Remark: Reporting limit = Quantitation limit of analyte in sample

Test Conducted

(IV) Measurement Flowchart:

Test For Cd/Pb/Hg/Chromium (VI)/PBBS/PBDES Contents
 Reference Standard: IEC 62321 edition 1.0:2008



Remarks:

*1: List Of Appropriate Acid:

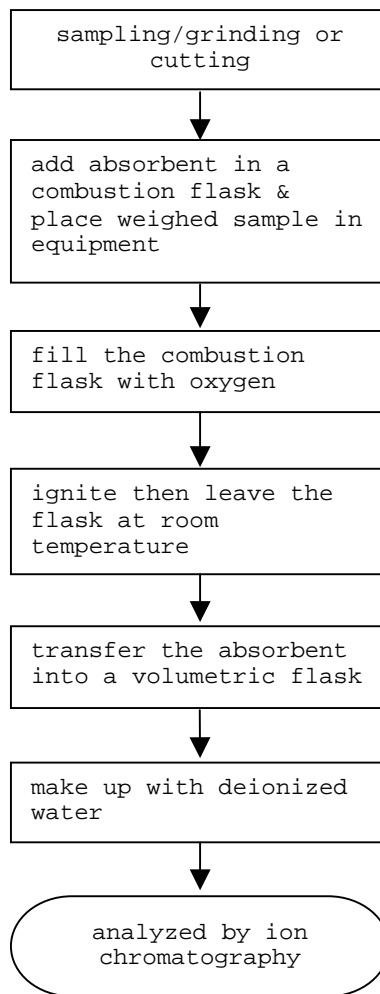
Material	Acid Added For Digestion
Polymers	HNO ₃ , HCl, HF, H ₂ O ₂ , H ₃ BO ₃
Metals	HNO ₃ , HCl, HF
Electronics	HNO ₃ , HCl, H ₂ O ₂ , HBF ₄

*2: If the result of spot test is positive, Chromium VI would be determined as detected.

Test Conducted

(IV) Measurement Flowchart:

Test For Halogen Content
Reference Standard: EN 14582



End Of Report

Test Conducted

Photo





Test Report

Applicant: Littelfuse, Inc.
800 E. NORTHWEST HWY
DESPLAINES IL 60016

Number : TWNC00132836

Date : Sep 29, 2009

Sample Description:

One (1) group of submitted samples said to be :

Sample Description : Cap/ Lead Assay
(A)Base meterial
(B)Plating

Style / Item No. : 910-263

Date Sample Received : Sep 23, 2009

Date Test Started : Sep 24, 2009

Test Conducted:

As requested by the applicant, for details please refer to attached pages.

Authorized By:
On Behalf Of Intertek Testing Services
Taiwan Limited



K. Y. Liang
Director

This report shall not be reproduced
except in full, without the written
approval of the laboratory.



Number : TWNC00132836

Test Conducted

(I) Test Result Summary :

<u>Testing Item</u>	<u>Result (ppm)</u>	
	<u>(A)</u>	<u>(B)</u>
Heavy Metal		
Cadmium (Cd) content	ND	ND
Lead (Pb) content	ND	ND
Mercury (Hg) content	ND	ND
Chromium VI (Cr ⁶⁺) content (mg/kg with 50cm ²)	Negative (< 0.02)	Negative (< 0.02)

Remarks: ppm = Parts per million based on weight of tested sample = mg/kg
ND = Not detected
< = Less than
mg/kg with 50cm² = milligram per kilogram with 50 square centimetre
Negative = A negative test result indicated positive observation
was not found at the time of testing.

Responsibility Of Chemist : Irene Chiou / Kevin Liu / Cathy Chen

Date Sample Received : Sep 23, 2009
Testing Period : Sep 24, 2009 To Sep 28, 2009

(II) RoHS Requirement:

<u>Restricted Substances</u>	<u>Limits</u>
Cadmium (Cd) Content	0.01% (100ppm)
Lead (Pb) Content	0.1% (1000ppm)
Mercury (Hg) Content	0.1% (1000ppm)
Chromium VI (Cr ⁶⁺) Content	0.1% (1000ppm)

The above limits were quoted from 2002/95/EC and amendment 2005/618/EC for homogeneous material.

Test Conducted

(III) Test Method:

<u>Testing Item</u>	<u>Testing Method</u>	<u>Reporting Limit</u>
Cadmium (Cd) content	With reference to IEC 62321 edition 1.0:2008 in clause 8/9/10, by microwave digestion until the tested samples are totally dissolved and determined by ICP-OES.	2 ppm
Lead (Pb) content	With reference to IEC 62321 edition 1.0:2008 in clause 8/9/10, by microwave digestion until the tested samples are totally dissolved and determined by ICP-OES.	2 ppm
Mercury (Hg) content	With reference to IEC 62321 edition 1.0:2008 in clause 7, by microwave digestion until the tested samples are totally dissolved and determined by ICP-OES.	2 ppm
Chromium VI (Cr ⁶⁺) content	With reference to IEC 62321 edition 1.0:2008 in annex B, by boiling water extraction and determined by UV-Vis spectrophotometer.	0.02 mg/kg with 50cm ²

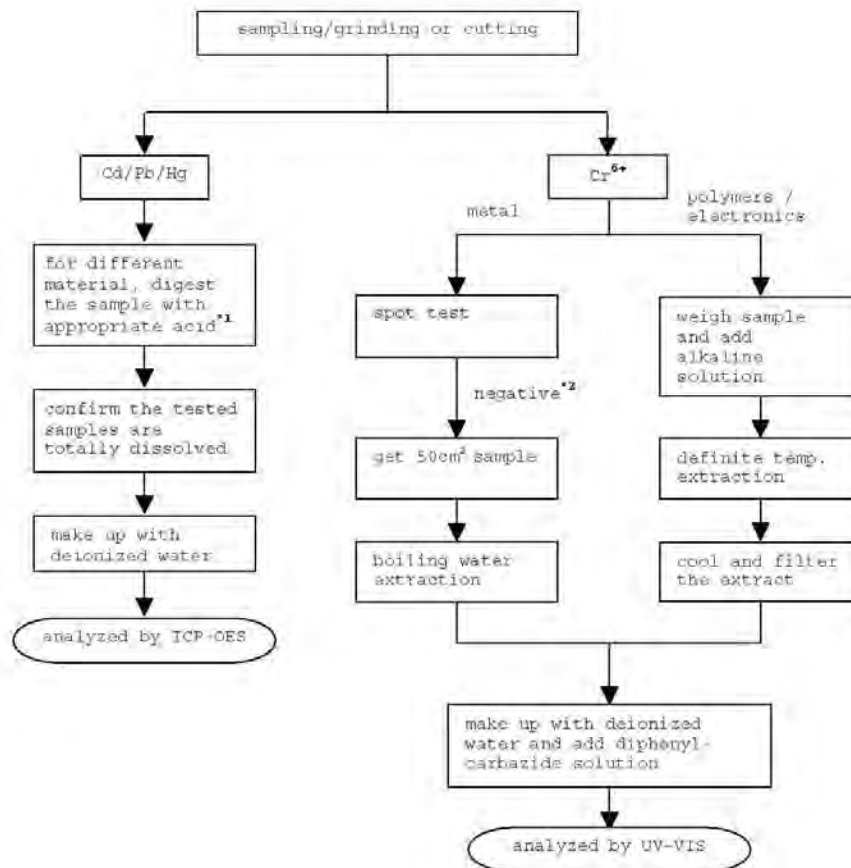
Remark: Reporting limit = Quantitation limit of analyte in sample

Test Conducted

(IV) Measurement Flowchart:

Test For Cd/Pb/Hg/Chromium (VI)

Reference Standard : IEC 62321 edition 1.0:2008



Remarks:

*1: List Of Appropriate Acid:

Material	Acid Added For Digestion
Polymers	HNO ₃ , HCl, HF, H ₂ O ₂ , H ₃ BO ₃
Metals	HNO ₃ , HCl, HF
Electronics	HNO ₃ , HCl, H ₂ O ₂ , HBF ₄

*2: If the result of spot test is positive, Chromium VI would be determined as detected.

End Of Report

Test Conducted

Photo





Test Report

Number : TWNC00139515

Applicant: Littelfuse, Inc.
800 E. Northwest Hwy
Desplaines IL 60016

Date : Nov 20, 2009

Sample Description:

One (1) group of submitted samples said to be :

Sample Description : Element-CuClad Fe58 Ni Ag By weight (497xxx)
Style / Item No. : 497226
Date Sample Received : Nov 17, 2009
Date Test Started : Nov 18, 2009

Test Conducted :

As requested by the applicant, for details please refer to attached pages.

Authorized By:
On Behalf Of Intertek Testing Services
Taiwan Limited



K. Y. Liang
Director

This report shall not be reproduced
except in full, without the written
approval of the laboratory.



Number : TWNC00139515

Test Conducted

(I) Test Result Summary :

<u>Testing Item</u>	<u>Result (ppm)</u>
	<u>Silvery Metal Wire</u>
Heavy Metal	
Cadmium (Cd) content	ND
Lead (Pb) content	ND
Mercury (Hg) content	ND
Chromium VI (Cr ⁶⁺) content (mg/kg with 50cm ²)	Negative (< 0.02) (#)

Remarks: ppm = parts per million based on weight of tested sample = mg/kg
ND = Not Detected
< = Less Than
mg/kg with 50cm² = milligram per kilogram with 50 square centimeter
Negative = A negative test result indicated positive observation was not found at the time of testing. When the spot test showed a negative result, the boiling water extraction procedure shall be used to verify the result.
= Due to the insufficient sample area, reduced total sample surface of 10 cm² was used and the dilution factor was adjusted accordingly.

Responsibility Of Chemist : Irene Chiou / Kevin Liu / Cathy Chen

Date Sample Received : Nov 17, 2009
Testing Period : Nov 18, 2009 to Nov 20, 2009

(II) RoHS Requirement:

<u>Restricted Substances</u>	<u>Limits</u>
Cadmium (Cd) Content	0.01% (100ppm)
Lead (Pb) Content	0.1% (1000ppm)
Mercury (Hg) Content	0.1% (1000ppm)
Chromium VI (Cr ⁶⁺) Content	0.1% (1000ppm)

The above limits were quoted from 2002/95/EC and amendment 2005/618/EC for homogeneous material.

Test Conducted

(III) Test Method:

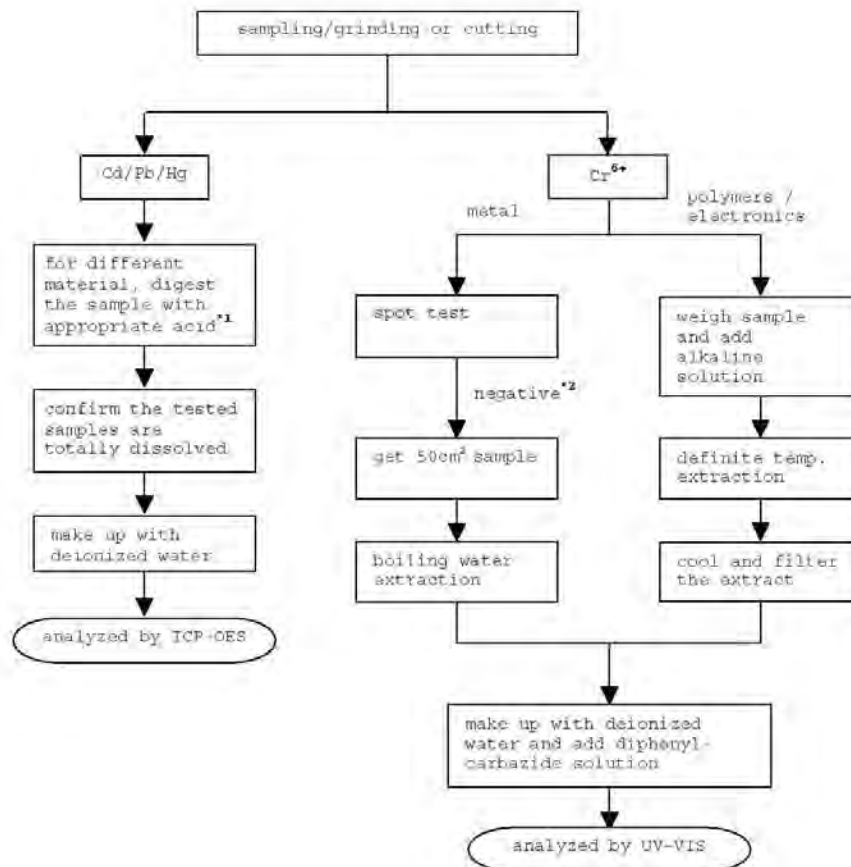
<u>Testing Item</u>	<u>Testing Method</u>	<u>Reporting Limit</u>
Cadmium (Cd) content	With reference to IEC 62321 edition 1.0:2008 in clause 8/9/10, by microwave digestion until the tested samples are totally dissolved and determined by ICP-OES.	2 ppm
Lead (Pb) content	With reference to IEC 62321 edition 1.0:2008 in clause 8/9/10, by microwave digestion until the tested samples are totally dissolved and determined by ICP-OES.	2 ppm
Mercury (Hg) content	With reference to IEC 62321 edition 1.0:2008 in clause 7, by microwave digestion until the tested samples are totally dissolved and determined by ICP-OES.	2 ppm
Chromium VI (Cr ⁶⁺) content	With reference to IEC 62321 edition 1.0:2008 in annex B, by boiling water extraction and determined by UV-Vis spectrophotometer.	0.02 mg/kg with 50cm ²

Remark: Reporting Limit = Quantitation limit of analyte in sample

Test Conducted

(IV) Measurement Flowchart:

Test For Cd/Pb/Hg/Chromium (VI)
 Reference Standard : IEC 62321 edition 1.0:2008



Remarks:

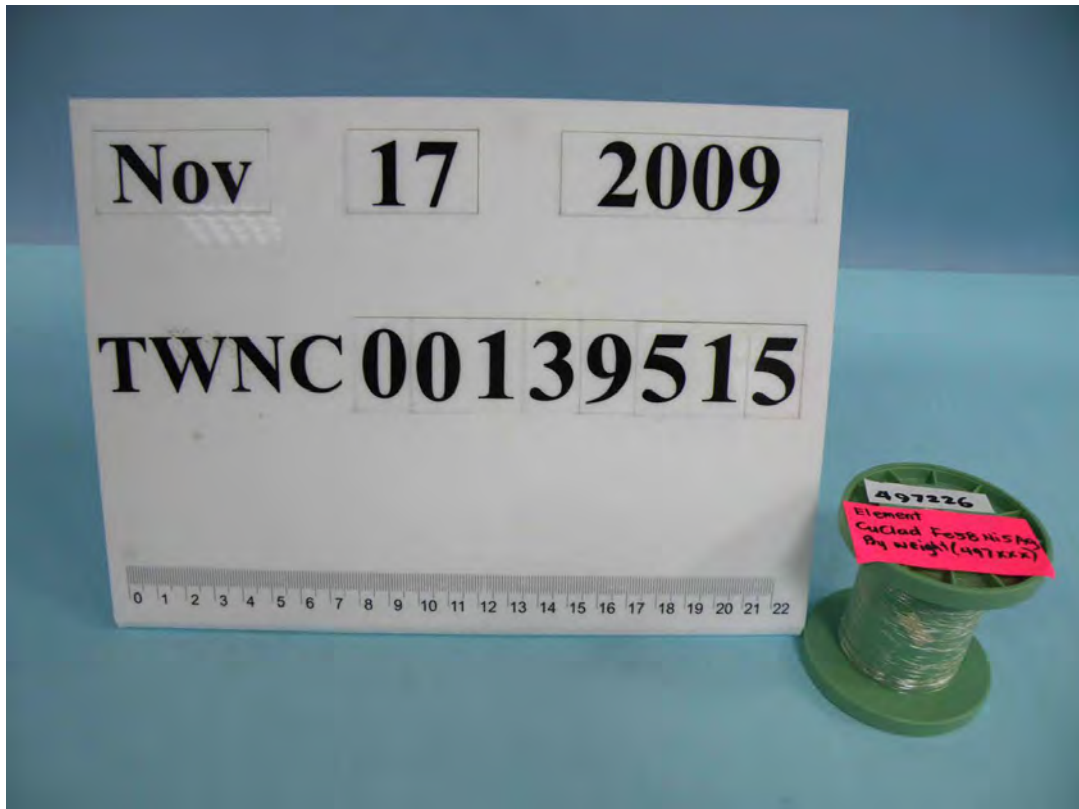
*1: List Of Appropriate Acid:

Material	Acid Added For Digestion
Polymers	HNO ₃ , HCl, HF, H ₂ O ₂ , H ₃ BO ₃
Metals	HNO ₃ , HCl, HF
Electronics	HNO ₃ , HCl, H ₂ O ₂ , HBF ₄

*2: If the result of spot test is positive, Chromium VI would be determined as detected.

Test Conducted

Photo





TEST REPORT

NUMBER: SHAH00176754

APPLICANT: LITTELFUSE, INC.
800 E. NORTHWEST HWY
ATTN: A.DIVIETRO/D.UNTIEDT

DATE: FEB 10, 2010

SAMPLE DESCRIPTION:

One (1) group of submitted samples said to be **Coppery Wire.**

Part Description : Element.
Part Number : 99% Cu 082xxx.
Date Sample Received : Feb.3, 2010.
Date Test Started : Feb.3, 2010.

TESTS CONDUCTED:

AS REQUESTED BY THE APPLICANT, FOR DETAILS REFER TO ATTACHED PAGE(S)

TO BE CONTINUED

PREPARED AND CHECKED BY:
FOR INTERTEK TESTING SERVICES
LTD., SHANGHAI

AUTHORIZED BY:
FOR INTERTEK TESTING SERVICES
LTD., SHANGHAI

MYRA LV
CHEMICAL DIVISION MANAGER

STEPHEN TSANG
GENERAL MANAGER



TEST REPORT

NUMBER: SHAH00176754

TESTS CONDUCTED

(I) Test Result Summary :

<u>Testing Item</u>	<u>Result (ppm)</u>
Heavy Metal	
Cadmium (Cd) content	ND
Lead (Pb) content	ND
Mercury (Hg) content	ND
Chromium VI (Cr ⁶⁺) content (mg/kg with 50cm ²)	ND

Remarks: ppm = Parts per million = mg/kg

ND = Not detected

mg/kg with 50cm² = milligram per kilogram with 50 square centimetre

Responsibility Of Chemist : Dent Fang

(II) RoHS Requirement:

<u>Restricted Substances</u>	<u>Limits</u>
Cadmium (Cd) Content	0.01% (100ppm)
Lead (Pb) Content	0.1% (1000ppm)
Mercury (Hg) Content	0.1% (1000ppm)
Chromium VI (Cr ⁶⁺) Content	0.1% (1000ppm)

The above limits were quoted from 2002/95/EC and amendment 2005/618/EC for homogeneous material.

TO BE CONTINUED



TEST REPORT

NUMBER: SHAH00176754

TESTS CONDUCTED

(III) Test Method:

<u>Testing Item</u>	<u>Testing Method</u>	<u>Reporting Limit</u>
Cadmium (Cd) content	With reference to IEC 62321 edition 1.0:2008 in clause 8/9/10, by microwave digestion until the tested samples are totally dissolved and determined by ICP-OES.	2 ppm
Lead (Pb) content	With reference to IEC 62321 edition 1.0:2008 in clause 8/9/10, by microwave digestion until the tested samples are totally dissolved and determined by ICP-OES.	2 ppm
Mercury (Hg) content	With reference to IEC 62321 edition 1.0:2008 in clause 7, by microwave digestion until the tested samples are totally dissolved and determined by ICP-OES.	2 ppm
Chromium VI (Cr ⁶⁺) content	With reference to IEC 62321 edition 1.0:2008 in annex B, by boiling water extraction and determined by UV-Vis spectrophotometer.	0.02 mg/kg with 50cm ²

Remark: Reporting limit = Quantitation limit of analyte in sample

Date Sample Received : Feb.3, 2010

Testing Period : Feb.3, 2010 TO Feb.8, 2010

TO BE CONTINUED

TEST REPORT

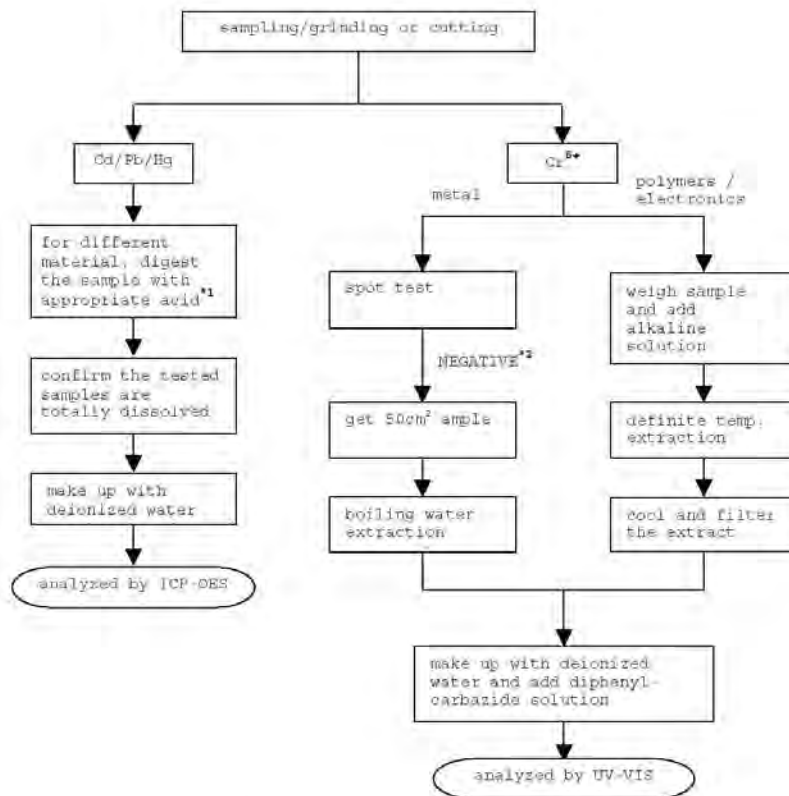
NUMBER: SHAH00176754

TESTS CONDUCTED

(IV) Measurement Flowchart:

Test For Cd/Pb/Hg/Chromium (VI)

Reference Standard: IEC 62321 edition 1.0:2008



Remarks:

*1: List Of Appropriate Acid:

Material	Acid Added For Digestion
Polymers	HNO ₃ , HCl, HF, H ₂ O ₂ , H ₂ BO ₃
Metals	HNO ₃ , HCl, HF
Electronics	HNO ₃ , HCl, H ₂ O ₂ , HBF ₄

*2: If the result of spot test is positive, Chromium VI would be determined as detected.

TO BE CONTINUED

TEST REPORT

NUMBER: SHAH00176754

TESTS CONDUCTED



END OF REPORT



Test Report

Applicant: Littelfuse, Inc.
800 E. Northwest Hwy
Desplaines IL 60016

Number : TWNC00141510

Date : Dec 09, 2009

Sample Description:

One (1) group of submitted samples said to be :
Part Description : Solder
Part Number : 692320
Date Sample Received : Dec 04, 2009
Date Test Started : Dec 04, 2009

Test Conducted :

As requested by the applicant, for details please refer to attached pages.

Authorized By:
On Behalf Of Intertek Testing Services
Taiwan Limited



K. Y. Liang
Director

This report shall not be reproduced
except in full, without the written
approval of the laboratory.



Number : TWNC00141510

Test Conducted

(I) Test Result Summary :

<u>Testing Item</u>	<u>Result (ppm)</u>
	<u>Silvery Metal</u>
Heavy Metal	
Cadmium (Cd) content	ND
Lead (Pb) content	850739
Mercury (Hg) content	ND
Chromium VI (Cr ⁶⁺) content (mg/kg with 50cm ²)	Negative (< 0.02)

Remarks: ppm = Parts per million based on weight of tested sample = mg/kg
ND = Not detected
< = Less than
mg/kg with 50cm² = milligram per kilogram with 50 square centimetre
Negative = A negative test result indicated positive observation was not found at the time of testing.

Responsibility Of Chemist : Irene Chiou / Kevin Liu / Cathy Chen

Date Sample Received : Dec 04, 2009

Testing Period : Dec 04, 2009 to Dec 09, 2009

(II) RoHS Requirement:

<u>Restricted Substances</u>	<u>Limits</u>
Cadmium (Cd) Content	0.01% (100ppm)
Lead (Pb) Content	0.1% (1000ppm)
Mercury (Hg) Content	0.1% (1000ppm)
Chromium VI (Cr ⁶⁺) Content	0.1% (1000ppm)

The above limits were quoted from 2002/95/EC and amendment 2005/618/EC for homogeneous material.



Number : TWNC00141510

Test Conducted

(III) Test Method:

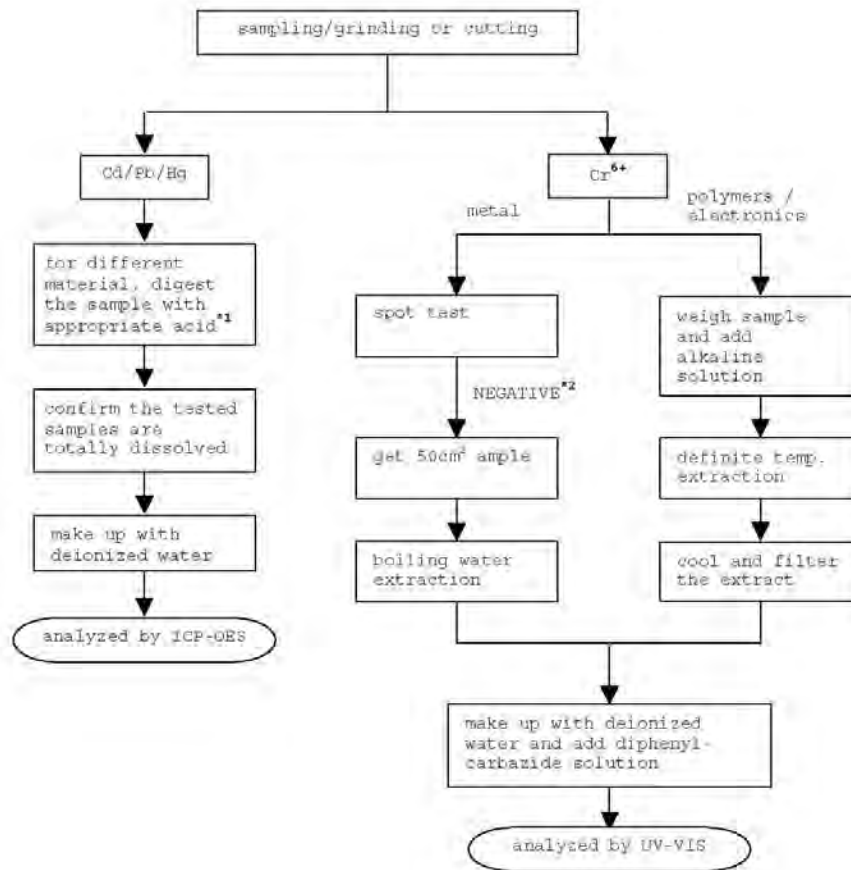
Testing Item	Testing Method	Reporting Limit
Cadmium (Cd) content	With reference to IEC 62321 edition 1.0:2008 in clause 8/9/10, by microwave digestion until the tested samples are totally dissolved and determined by ICP-OES.	2 ppm
Lead (Pb) content	With reference to IEC 62321 edition 1.0:2008 in clause 8/9/10, by microwave digestion until the tested samples are totally dissolved and determined by ICP-OES.	2 ppm
Mercury (Hg) content	With reference to IEC 62321 edition 1.0:2008 in clause 7, by microwave digestion until the tested samples are totally dissolved and determined by ICP-OES.	2 ppm
Chromium VI (Cr ⁶⁺) content	With reference to IEC 62321 edition 1.0:2008 in annex B, by boiling water extraction and determined by UV-Vis spectrophotometer.	0.02 mg/kg with 50cm ²

Remark: Reporting limit = Quantitation limit of analyte in sample

Test Conducted

(IV) Measurement Flowchart:

Test For Cd/Pb/Hg/Chromium (VI)
 Reference Standard : IEC 62321 edition 1.0:2008



Remarks:

*1: List Of Appropriate Acid:

Material	Acid Added For Digestion
Polymers	HNO ₃ , HCl, HF, H ₂ O ₂ , H ₃ BO ₃
Metals	HNO ₃ , HCl, HF
Electronics	HNO ₃ , HCl, H ₂ O ₂ , HBF ₄

*2: If the result of spot test is positive, Chromium VI would be determined as detected.

Test Conducted

Photo





Test Report

Number : TWNC00141512

Applicant: Littelfuse, Inc.
800 E. Northwest Hwy
Desplaines IL 60016

Date : Dec 08, 2009

Sample Description:

One (1) group of submitted samples said to be :
Part Description : Epoxy Powder (RoHS Gold)
Part Number : 087234
Date Sample Received : Dec 04, 2009
Date Test Started : Dec 04, 2009

Test Conducted :

As requested by the applicant, for details please refer to attached pages.

Authorized By:
On Behalf Of Intertek Testing Services
Taiwan Limited



K. Y. Liang
Director

This report shall not be reproduced
except in full, without the written
approval of the laboratory.



Number : TWNC00141512

Test Conducted

(I) Test Result Summary :

<u>Testing Item</u>	<u>Result (ppm)</u>
	<u>Submitted Samples</u>
Heavy Metal	
Cadmium (Cd) content	ND
Lead (Pb) content	ND
Mercury (Hg) content	ND
Chromium VI (Cr ⁶⁺) content	ND
Polybrominated Biphenyls (PBBs)	
Monobrominated Biphenyls (MonoBB)	ND
Dibrominated Biphenyls (DiBB)	ND
Tribrominated Biphenyls (TriBB)	ND
Tetrabrominated Biphenyls (TetraBB)	ND
Pentabrominated Biphenyls (PentaBB)	ND
Hexabrominated Biphenyls (HexaBB)	ND
Heptabrominated Biphenyls (HeptaBB)	ND
Octabrominated Biphenyls (OctaBB)	ND
Nonabrominated Biphenyls (NonaBB)	ND
Decabrominated Biphenyl (DecaBB)	ND
Polybrominated Diphenyl Ethers (PBDEs)	
Monobrominated Diphenyl Ethers (MonoBDE)	ND
Dibrominated Diphenyl Ethers (DiBDE)	ND
Tribrominated Diphenyl Ethers (TriBDE)	ND
Tetrabrominated Diphenyl Ethers (TetraBDE)	ND
Pentabrominated Diphenyl Ethers (PentaBDE)	ND
Hexabrominated Diphenyl Ethers (HexaBDE)	ND
Heptabrominated Diphenyl Ethers (HeptaBDE)	ND
Octabrominated Diphenyl Ethers (OctaBDE)	ND
Nonabrominated Diphenyl Ethers (NonaBDE)	ND
Decabrominated Diphenyl Ether (DecaBDE)	ND
Halogen Content	
Fluorine (F)	ND
Chlorine (Cl)	740
Bromine (Br)	40464
Iodine (I)	ND

Remarks: ppm = Parts per million based on weight of tested sample = mg/kg
ND = Not detected

Responsibility Of Chemist : Irene Chiou / Kevin Liu / Cathy Chen

Date Sample Received : Dec 04, 2009

Testing Period : Dec 04, 2009 to Dec 08, 2009



Number : TWNC00141512

Test Conducted

(II) RoHS Requirement :

<u>Restricted Substances</u>	<u>Limits</u>
Cadmium (Cd) Content	0.01% (100ppm)
Lead (Pb) Content	0.1% (1000ppm)
Mercury (Hg) Content	0.1% (1000ppm)
Chromium VI (Cr ⁶⁺) Content	0.1% (1000ppm)
Polybrominated Biphenyls (PBBs)	0.1% (1000ppm)
Polybrominated Diphenyl Ehters (PBDEs)	0.1% (1000ppm)

The above limits were quoted from 2002/95/EC and amendment 2005/618/EC for homogeneous material.

(III) Test Method:

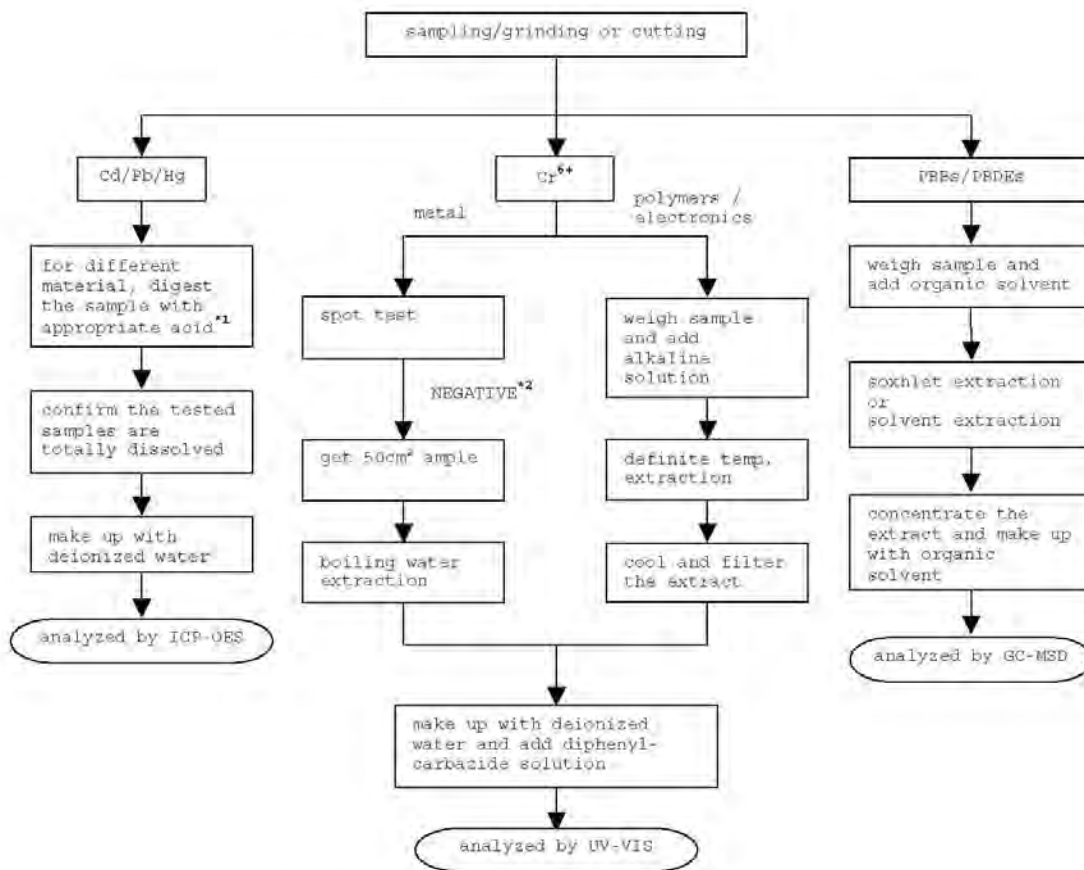
<u>Testing Item</u>	<u>Testing Method</u>	<u>Reporting Limit</u>
Cadmium (Cd) content	With reference to IEC 62321 edition 1.0:2008 in clause 8/9/10, by microwave digestion until the tested samples are totally dissolved and determined by ICP-OES.	2 ppm
Lead (Pb) content	With reference to IEC 62321 edition 1.0:2008 in clause 8/9/10, by microwave digestion until the tested samples are totally dissolved and determined by ICP-OES.	2 ppm
Mercury (Hg) content	With reference to IEC 62321 edition 1.0:2008 in clause 7, by microwave digestion until the tested samples are totally dissolved and determined by ICP-OES.	2 ppm
Chromium VI (Cr ⁶⁺) content	With reference to IEC 62321 edition 1.0:2008 in annex C, by alkaline digestion and determined by UV-Vis spectrophotometer.	1 ppm
Polybrominated Biphenyls (PBBs)	With reference to IEC 62321 edition 1.0:2008 in annex A, by solvent extraction and determined by GC-MSD and further HPLC confirmation when necessary.	5 ppm
Polybrominated Diphenyl Ethers (PBDEs)	With reference to IEC 62321 edition 1.0:2008 in annex A, by solvent extraction and determined by GC-MSD and further HPLC confirmation when necessary.	5 ppm
Halogen Content	With reference to EN 14582:2007 by combustion flask with oxygen and determined by ion chromatography	50 ppm

Remark: Reporting limit = Quantitation limit of analyte in sample

Test Conducted

(IV) Measurement Flowchart:

Test For Cd/Pb/Hg/Chromium (VI)/PBBS/PBDEs Contents
 Reference Standard: IEC 62321 edition 1.0:2008



Remarks:

*1: List Of Appropriate Acid:

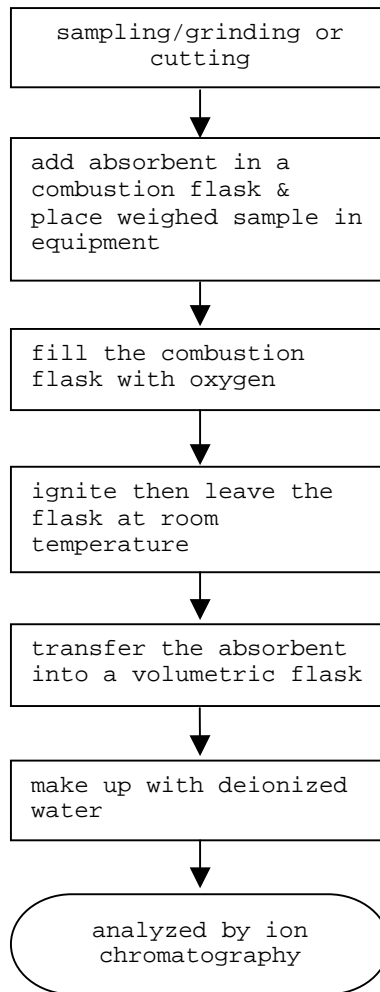
Material	Acid Added For Digestion
Polymers	HNO ₃ , HCl, HF, H ₂ O ₂ , H ₃ BO ₃
Metals	HNO ₃ , HCl, HF
Electronics	HNO ₃ , HCl, H ₂ O ₂ , HBF ₄

*2: If the result of spot test is positive, Chromium VI would be determined as detected.

Test Conducted

(IV) Measurement Flowchart:

Test For Halogen Content
Reference Standard: EN 14582



End Of Report

Test Conducted

Photo

