

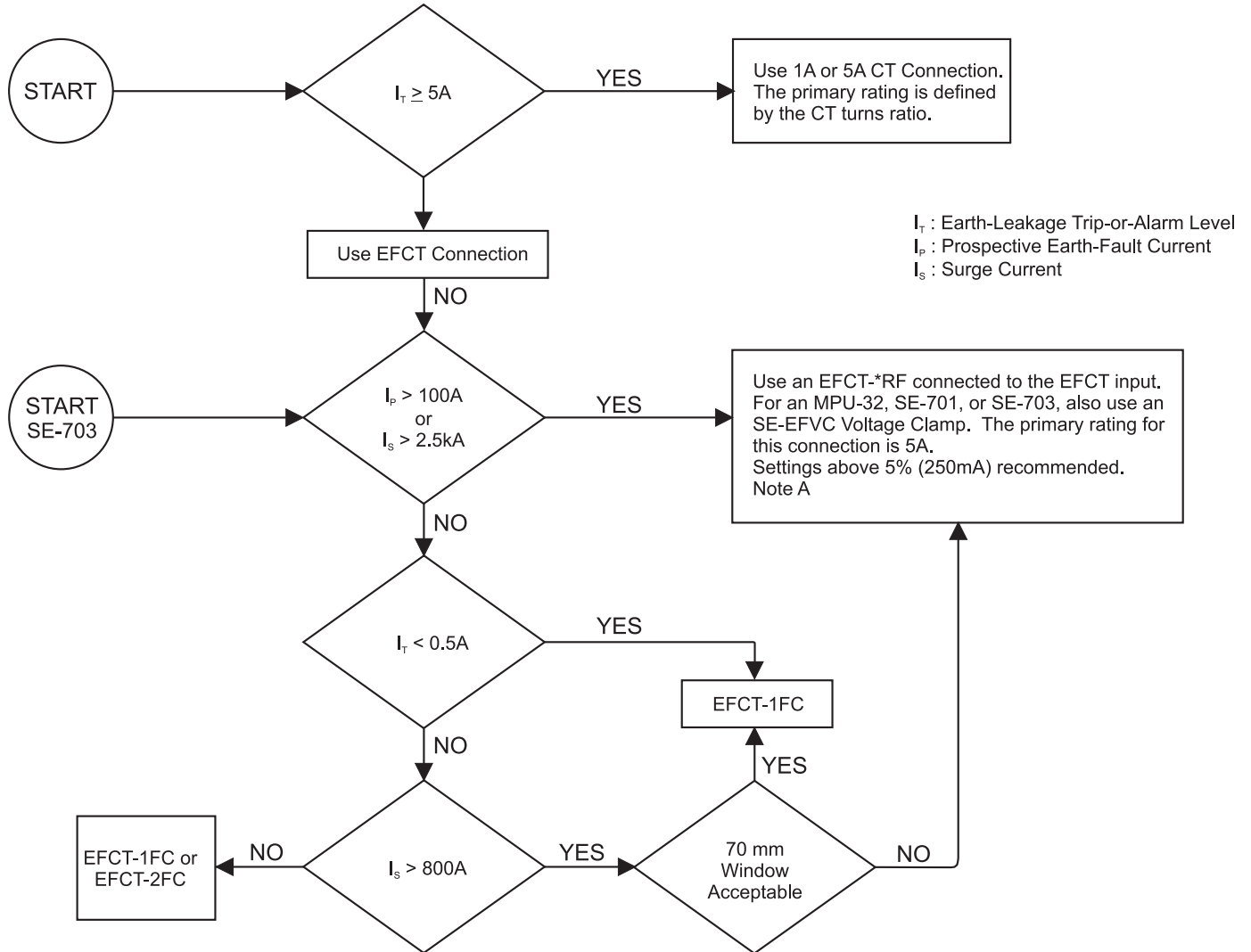


11.1AU

TECHNICAL INFORMATION

TITLE: EARTH-FAULT-CT SELECTION FLOWCHART

Applicable Monitors: MPU-32, MPS, SE-330, SE-701, SE-703



I_t : Earth-Leakage Trip-or-Alarm Level
 I_p : Prospective Earth-Fault Current
 I_s : Surge Current

Note A: EFCT-5RF, 60 mm Window diameter.
 EFCT-6RF, 85mm Window diameter.
 EFCT-7RF, 112 mm Window diameter.
 EFCT-8RF, 140 mm Window diameter.
 EFCT-9RF, 160 mm Window diameter.
 EFCT-10RF, 200 mm Window diameter.
 Other 500:5 or 100:1 CT's may work, but the user should test to verify performance.

Note B: EFCT-1FC: CT complete with flux conditioner, 70 mm Window.
 EFCT-2FC: CT complete with flux conditioner, 140 mm Window.

See Monitoring Neutral-Grounding Resistor paper for ground-fault settings in resistance-grounded applications.

DATE	REV	AUTHOR	DOCUMENT LOCATION	PAGE
2006-Feb-06	1	MS	http://www.startco.ca/library/techinfo/section11/11.1AU.pdf	1 of 1